



### General Description:

The SMH-1 Speaker Mounting Kit consists of four die-cast zinc alloy speaker mounting clamps, finished in black enamel, four 1/4-20 combination slotted hex washer head machine screws one inch long, and four 1/4-20 T-nuts. These clamps and T-nuts are designed to make both initial mounting and subsequent change of any of the following speakers simple and quick; EVM12L, EVM15B, EVM15L, EVM18B, PRO12B, SP12C, SP15A, 12TRXC. They can be used for any other speakers having rim dimensions compatible with those shown above. Using the screws supplied with the kit, panel thickness slightly over one inch can be accommodated. If greater thickness is required the 1/4-20 machine screws are usually available at any hardware store in quite a variety of lengths. The T-nuts can accommodate a panel thickness down to about one half inch.

### Suggestions for Initial Installation:

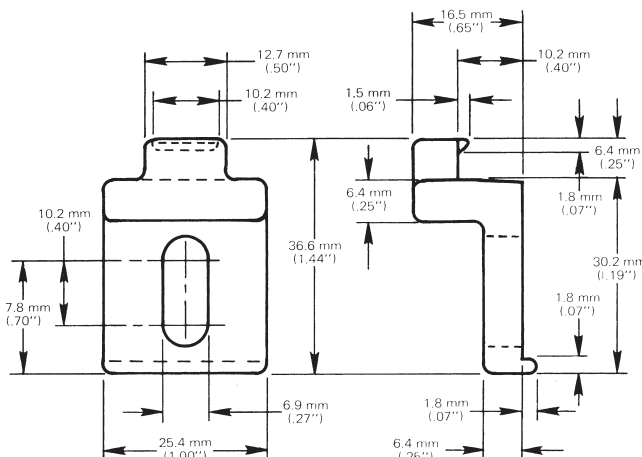
Experience has indicated that it is best to cut the speaker clearance hole first. It is then easy to locate the clamp mounting screw holes using the speaker as a template.

With the mounting panel horizontal so as to hold the speaker in place by gravity, position the speaker for symmetrical location of the mounting clamps. Note that they can be used only where the front gasket has been relieved for the mounting holes in the rim of the speaker. Place the clamps in position. With a pencil or other marking instrument outline the slots of the mounting clamps. Remove the clamps and speaker so you can easily drill the clamp screw mounting holes. The holes can be anything from 5/16 to 11/32 diameter (either a P or Q drill falls within this range). Install the T-nuts from the back of the holes being sure that the tube of the nuts is inside the hole and that that prongs are inserted into the wood so the unit will stay in place.

Now install the gaskets or sealant around the rim of the speaker clearance hole and drop the speaker into place. The clamps can now be positioned over their respective holes and the screws installed. It is not necessary to tighten the screws beyond the point where a good seal is achieved by compression of the gaskets. Excessive tightening may bend the frame of the speaker to the point where the voice coil is rubbing against the pole pieces of the magnetic assembly with serious results.

### Quick Change:

It is not necessary to remove the screws entirely to remove the speaker from the mounting. The small lip on the end of the clamp will completely clear the rim of the speaker after the screw has been rotated not more than three turns. The clamp can then be turned out of the way and the speaker removed.



### Warranty (Limited):

Electro-Voice Speakers and Speaker Systems (excluding active electronics) are guaranteed for five years from date of original purchase against malfunction due to defects in workmanship and materials. If such malfunction occurs, unit will be repaired or replaced (at our option) without charge for materials or labor if delivered prepaid to the proper Electro-Voice service facility. Unit will be returned prepaid. Warranty does not extend to finish, appearance items, burned coils, or malfunction due to abuse or operation under other than specified conditions, including cone and/or coil damage resulting from improperly designed enclosures, nor does it extend to incidental or consequential damages. Some states do not allow the exclusion or limitation of incidental or consequential damages, so the above exclusion may not apply to you. Repair by other than Electro-Voice or its authorized service agencies will void this guarantee. A list of authorized warranty service agencies is available from Electro-Voice, Inc., 600 Cecil Street, Buchanan, MI 49107 (AC/616-695-6831); or Electro-Voice West, 8234 Doe Avenue, Visalia, CA 93291 (AC/209-651-7777). This warranty gives you specific legal rights, and you may also have other rights which vary from state to state.

Service and repair address for this product: Electro-Voice, Inc., 600 Cecil Street, Buchanan, Michigan 49107.

Specifications are subject to change without notice.