



## MODEL 201 MICROPHONE

### CONNECTION AND OPERATING INSTRUCTIONS

Model 201 is a dynamic microphone especially designed for high speech intelligibility for dispatch, paging, or PA use. It has a push-to-talk front touch bar and locking on-off lever switch, and comes with a 7' cable connected to a phone plug with additional wires for "precedence" circuit operation for use with Raymer amplifiers and receivers to mute music while paging.

#### UNPACKING:

The unit is to be removed carefully from the carton and inspected for any possible damage in transit. If there is evidence of any damage which might have occurred in shipment, notify your dealer at once, or the transportation company which delivered it. Claims for damage sustained in transit must be made upon the Carrier. Save all packing material for inspection by the claim agent who will furnish you with the proper forms and will also give you the necessary instructions for filing a claim. In addition to the Unit, there should be a warranty card included in the carton. To insure proper servicing and to protect your rights under the warranty, be sure to fill in the warranty registration card without delay and mail to the factory.

#### GUARANTEE

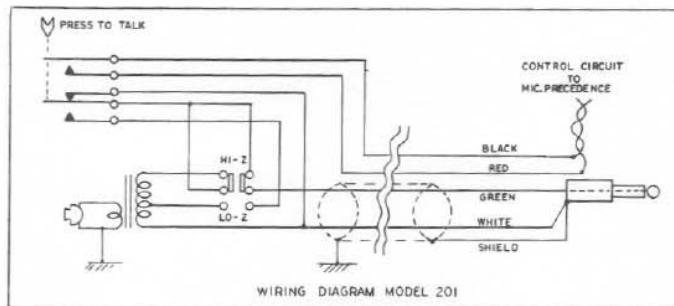
Each microphone is guaranteed to be free from electrical and mechanical defects for a period of one year from date of shipment from the factory. If any microphone appears to be defective, return to the factory for repair. This guarantee is void if the microphone shows any sign of having been damaged, or tampered with.

#### CONNECTION AND OPERATION

Model 201 microphone is shipped in the low impedance circuit position and may be connected directly to a 50-250 ohm line. By changing the position of the switch (located on the under side of the microphone base near the cable entry) to a high impedance circuit, it may be connected to any amplifier of 100,000 ohms or greater input impedance. To select the preferred impedance, remove the two screws holding the switch locking plate. Slide the switch to desired position as marked on the base and fasten the locking plate in position. The high impedance position, marked "Hi", is toward the front of the microphone.

The touch control bar can be used in a lock or non-locking position. For the microphone non-locking position, simply depress the bar and release. For use in a locking position, move the right-hand lever forward. To unlock, push the lever in a backward direction. The press-to-talk switch activates both the microphone circuit and an external control circuit. The microphone circuit is normally shorted in the high impedance position and open in the low impedance position.

The Model 201 microphone comes wired with a standard telephone plug as per wiring diagram indicated below. The two wires that come from the rear of the plug are to be connected to the two screw terminals marked "Mic. Precedence", if it is desired to mute the music while paging. The plug is to be inserted in the jack provided for on the Raymer units.



If more than one microphone is to be used to mute the music while paging, connect the control wires from these microphones IN PARALLEL across the microphone precedence terminals on the Raymer unit.

When it is necessary to extend the microphone cable, use a two conductor shielded cable for the audio circuits and a plain pair of unshielded wire to the control circuit. For a minimum hum pickup make sure that the white wire is connected to the shield only at the phone plug. Under no circumstances use four wires enclosed in a shield.

It is not recommended to extend the microphone cable more than 50 feet when using the high impedance output since it will affect the high frequency performance of the microphone. For best results when using a long cable, the switch is to be placed in the low impedance position.

**TRUTONE ELECTRONICS, INC.**  
7315 FULTON AVE., NORTH HOLLYWOOD, CALIFORNIA