

SPECIFICATIONS
AND
INSTRUCTIONS

X325 CROSSOVER

ELECTRO-VOICE, INC.
Buchanan, Michigan

Part No. 53689
Mimeo in U. S. A.
August, 1958

Electro-Voice crossover networks are high-Q low insertion loss, frequency discriminatory filters designed for use in systems having a characteristic impedance of 16 ohms.

E-V crossovers are designated by the 3 db-down point in the network frequency response curve. The high-pass section of the X325 crossover is 3 db down at 300 cps, as is also the low-pass section. Attenuation in the E-V X325 takes place at the rate of 6 db per octave,

Because high-Q air-core inductors are used in the X325 crossover network, filter characteristics are maintained constant despite changes in average values of program level. The X325 will safely handle up to 100 RMS watts. Since the average level of program material in home listening rarely exceeds 2 watts, the safety margin inherent in the design of this unit is indeed a large one. The component parts are potted in a thermoplastic asphalt and are housed in a drawn steel can.

The X325 crossover network is designed for use with E-V "K" type woofers when it is desired to crossover to the mid-range from the bass driver at a lower frequency. When the X325 is used in conjunction with standard 16-ohm bass drivers, connections should be made to the "LO" terminal. If a special "K" type bass driver is being used, optimum performance will be gained by connection to the terminal designated "K-LO".

SPECIFICATIONS

Crossover Frequency:	300 cps
Impedance:	16 ohms
Insertion Loss-Lo:	1 db
Hi:	0 db
Section:	1/4
Attenuation:	6 db/oct.
Phase Rotation:	135°
Dimensions - Height:	5-5/16"
Depth:	4-3/16"
Width:	5-1/4"
Shipping Weight:	4 lbs.

SPECIFICATIONS AND INSTRUCTIONS

X325 CROSSOVER

ELECTRO-VOICE, INC.
Buchanan, Michigan

Electro-Voice crossover networks are high-Q low insertion loss, frequency discriminatory filters designed for use in systems having a characteristic impedance of 16 ohms.

E-V crossovers are designated by the 3 db-down point in the network frequency response curve. The high-pass section of the X325 crossover is 3 db down at 300 cps, as is also the low-pass section. Attenuation in the E-V X325 takes place at the rate of 6 db per octave.

Because high-Q air-core inductors are used in the X325 crossover network, filter characteristics are maintained constant despite changes in average values of program level. The X325 will safely handle up to 100 RMS watts. Since the average level of program material in home listening rarely exceeds 2 watts, the safety margin inherent in the design of this unit is indeed a large one. The component parts are potted in a thermoplastic asphalt and are housed in a drawn steel can.

The X325 crossover network is designed for use with E-V "K" type woofers when it is desired to crossover to the mid-range from the bass driver at a lower frequency. When the X325 is used in conjunction with standard 16-ohm bass drivers, connections should be made to the "LO" terminal. If a special "K" type bass driver is being used, optimum performance will be gained by connection to the terminal designated "K-LO".

SPECIFICATIONS

Crossover Frequency:	300 cps
Impedance:	16 ohms
Insertion Loss-Lo:	1 db
Hi:	0 db
Section:	1/4
Attenuation:	6 db/oct.
Phase Rotation:	135°
Dimensions - Height:	5-5/16"
Depth:	4-3/16"
Width:	5-1/4"
Shipping Weight:	4 lbs.

Part No. 53689
Mimeo in U. S. A.
August, 1958

S-P-E-C-I-F-I-C-A-T-I-O-N-S

CROSSOVER FREQUENCY: 300 cps

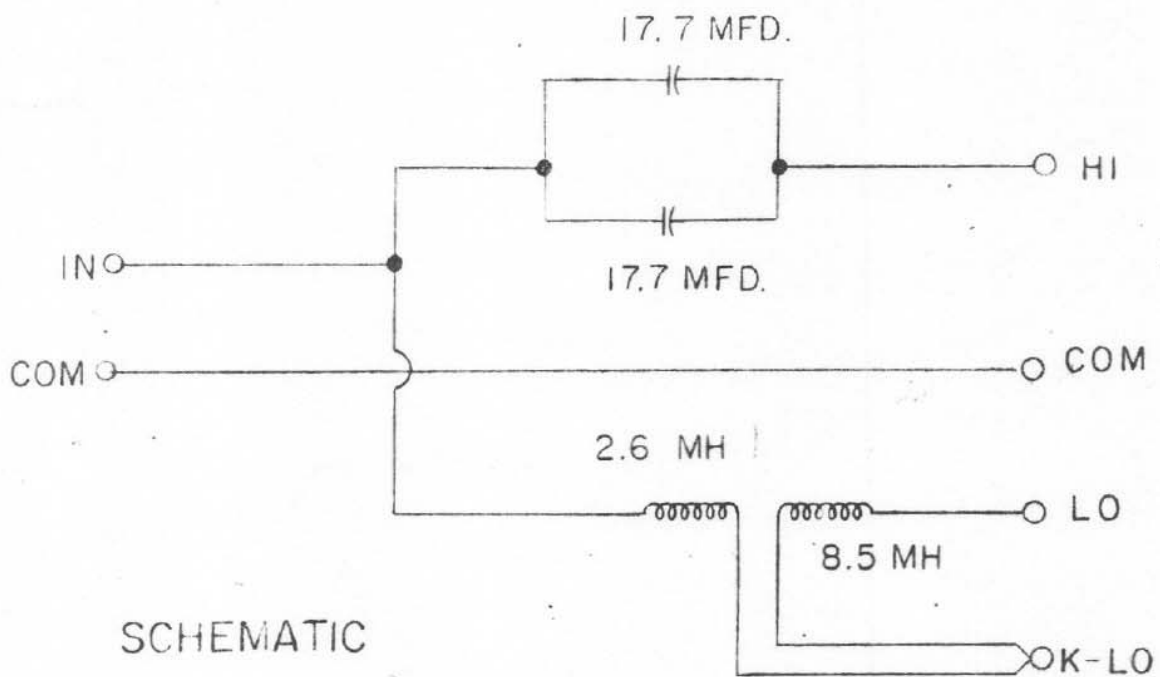
IMPEDANCE: 16 ohms Hi
5 ohms Lo

NET WEIGHT:

INSERTION LOSS: Hi-Pass - negligible
Lo-Pass - 1/2 db

SECTION: 1/4

*Proven
5/5/62*



NEXT ASSEMBLY	REQ'D	PART NO.	DESCRIPTION		FROM	COND.	DRG'N SIZE
BILL OF MATERIAL FOR ONE COMPLETE UNIT							
<p>UNSPECIFIED LIMITS: FRACTIONS ± .010 DECIMALS ± .003 ANGLES ± 1/2° HOLES + TOL. ONLY. CONCENTRICITY .010 T.I.R.</p> <p>NOTES: DO NOT SCALE DRAWING. UNMARKED ANGLES & INTERSECTIONS 90°. REMOVE BURRS & EXPOSED SHARP EDGES. THREADS TO BE AMERICAN STD. CLASS 2 AFTER PLAYING UNLESS OTHERWISE SPECIFIED.</p>	TITLE OR NAME				<p>Electro-Voice ELECTRO-VOICE, INC. BUCHANAN, MICHIGAN</p>		
	CUSTOMER SPEC SHEET						
	MATERIAL	END FINISH	HEAT TREAT	FROM & COND.	END USE OR CUSTOMER		
	DRAWN	DETAILED	CHECKED	ENGINEER	MODEL	X325	
			AB	LH	CONTRACT OR CUSTOMER No.	E.V. PART NO. 868-1870	
		5-13-55	843-58	SCALE	SPEC. NO.		
					SHEET	OF	