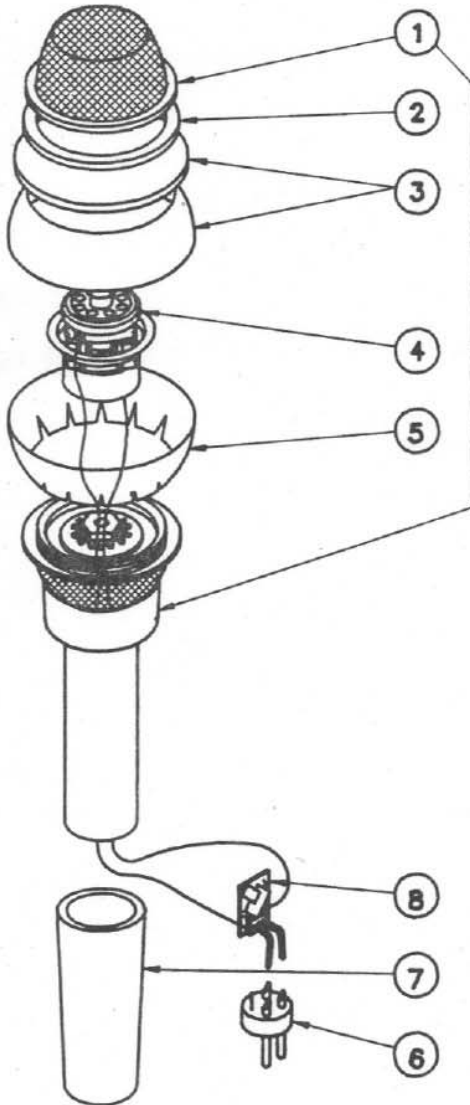




Electro-Voice®
 a MARK IV company
 600 Cecil Street
 Buchanan, Michigan 49107
 Phone: 616-695-6831
 FAX: 616-695-3104

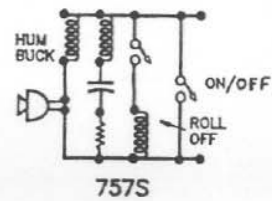
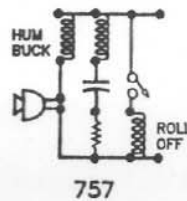
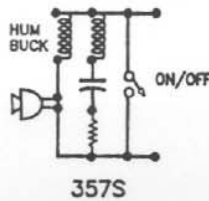
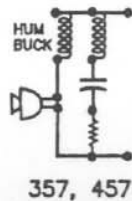
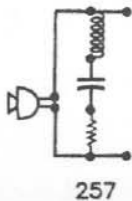
SERVICE DATA

N/D257B, 357B, 457B, 757B Microphones



| PARTS LIST | | |
|------------|-----------|-------------------------|
| Ref. No. | Part No. | Description |
| 1. | See chart | Screen & Handle S/A |
| | See chart | (top screen only) |
| 2. | 72813 | Bumper Ring, silver |
| | 72213 | Bumper Ring, black |
| | 71241 | Bumper Ring, gold |
| 3. | See chart | Wind Filter S/A |
| 4. | See chart | Head S/A |
| 5. | 71246 | Wind Filter, Spher. |
| 6. | 17162 | Connector Insert |
| 7. | 71220 | Handgrip |
| 8. | 82529 | Passive EQ. Circuit S/A |

| CHART | | | | |
|-------|----------|----------|----------|----------|
| Model | Item 1 | Screen | Item 3 | Item 4 |
| 257 | 82633-XX | 81205-ET | 82632-XX | 82535-XX |
| 357 | 82634-XX | 81209-ET | 82631-XX | 82530-XX |
| 357S | 82636-XX | 81209-ET | 82631-XX | 82530-XX |
| 457 | 82635-XX | 81205-ET | 82632-XX | 82539-XX |
| 757 | 82638-XX | 81209-ET | 82631-XX | 82540-XX |
| 757S | 82637-XX | 81209-ET | 82631-XX | 82540-XX |



INSTRUCTIONS

TOOLS REQUIRED:

LOW WATT SOLDERING IRON
SMALL SCREWDRIVER
NEEDLE NOSE PLIERS
METHYL-ETHYL-KETONE SOLVENT
BLUE BARKER CEMENT
THREAD LOCKER EV#97207
CYCOLAC CEMENT

1. UNSCREW FRONT SCREEN ASSEMBLY OF ITEM 1. REMOVE ITEM 6 BY APPLYING A SMALL AMOUNT OF 'MEK' SOLVENT BETWEEN BRASS RING AND CASE. ITEM 6 MAY NOW BE PRIED OR TWISTED OUT. UNSOLDER LEAD WIRES FROM ITEM 6. REMOVE TAPE HOLDING WIRES AND ANY CEMENT SECURING WIRES TO HEAD. CLEAN OUT CASE TO PREPARE FOR INSERTING NEW ITEM 6.

2. PASS LEADWIRES UNDER BAND OF SHOCKMOUNT. SOLDER WHITE LEAD TO TERMINAL WITH SPOT. COVER LEADS AT POINT JUST BELOW TERMINAL WITH CYCOLAC CEMENT. INSTALL HEAD ASSEMBLY INTO CASE WITH BLUE BARKER CEMENT. HOLD ASSEMBLY TO SCREEN USING WEIGHT OR TACK IN PLACE WITH SUPERGLUE WHILE BLUE BARKER DRIES.
3. REASSEMBLE SCREEN
4. IF REPLACING SCREWS ON BAIL APPLY THREAD LOCKER TO SCREW AND NUT BEFORE ASSEMBLING.

DISASSEMBLY INSTRUCTIONS

TOOLS REQUIRED:

LOW WATT SOLDERING IRON
SMALL SCREWDRIVER
SHARP KNIFE (X-ACTO OR EQUAL)
NEEDLE NOSE PLIERS
METHYL-ETHYL-KETONE SOLVENT
BLUE BARKER CEMENT

1. REMOVE ITEM 7 BY GRASPING NEAR TOP EDGE AND TWISTING OFF.
2. LOOSEN SCREW HOLDING ITEM 6. PULL OUT INSERT USING PLIERS. UNSOLDER LEADWIRES FROM CIRCUIT BOARD.
3. UNSCREW FRONT SCREEN ASSEMBLY OF ITEM 1. REMOVE ITEM 4. OLDER UNITS WILL REQUIRE THE SHOCK MOUNT TO BE CUT OUT USING SHARP KNIFE. NEW UNITS CAN BE REMOVED BY APPLYING A SMALL AMOUNT OF 'MEK' SOLVENT BETWEEN THE BRASS RING AND CASE AND THEN PRIED OUT. CLEAN OUT THE CASE TO PREPARE FOR INSERTING NEW HEAD S/A.

4. INSERT ITEM 5 INTO SCREEN ON HANDLE S/A BEING SURE THAT EDGES ARE LOCKED UNDER LIP OF THE CASE (THIS IS ONLY DONE IF ITEM 5 NEEDS REPLACEMENT). REPEAT FOR ITEM 3 IF NECESSARY INTO TOP SCREEN.
5. PASS LEADWIRES THROUGH STUD IN HANDLE AND SOLDER BLACK WIRE TO PAD ON ITEM 8 WHICH IS MARKED WITH NUMBER 3. SOLDER RED WIRE TO PAD ON ITEM 8 WHICH IS MARKED WITH NUMBER 2. IF OLDER STYLE UNIT, ITEM 8 NEEDS TO BE SOLDERED TO ITEM 6.
6. CEMENT ITEM 4 TO ITEM 1 USING A SMALL AMOUNT OF BLUE BARKER CEMENT. REASSEMBLE TOP SCREEN TO HANDLE. GENTLY PULL SLACK OF LEADWIRES THROUGH HANDLE AND ATTACH ITEM 6 TO HANDLE. SLIDE ITEM 7 ONTO HANDLE. NOTE IF INSTALLING NEW HANDGRIP WITH NOTCH IN CONNECTOR END THAT THE NOTCH IS TO BE ALIGNED WITH SCREW ON THE INSERT.



ELECTRO-VOICE, INC., 600 Cecil Street, Buchanan, Michigan 49107

MANUFACTURING PLANTS AT ■ BUCHANAN, MI ■ NEWPORT, TN ■ SEVIERVILLE, TN ■ OKLAHOMA CITY, OK ■ CANANOQUE, ONT.
©Electro-Voice Inc. 1992 ■ Litho in U.S.A. Part Number 531869 — 220

a MARK IV company